

# Technical data sheet

## Product features



### High-capacity boiling kettle electric indirect 200 l with automatic water charge

<b>Model</b>	<b>SAP Code</b>	00019452
BIQ 90/100 200 E AWF	<b>A group of articles - web</b>	Boiling kettles



- Device type: Electric unit
- Device heating type: Indirect
- Steam pressure regulation: Automatic - the pressure switch regulates the performance of the device
- Filling: Mechanical cock
- Jacket filling: Automatic
- Drain valve diameter: 2"
- Basin volume [l]: 200
- Usable volume [l]: 183

<b>SAP Code</b>	00019452	<b>Loading</b>	400 V / 3N - 50 Hz
<b>Net Width [mm]</b>	1000	<b>Basin volume [l]</b>	200
<b>Net Depth [mm]</b>	928	<b>Usable volume [l]</b>	183
<b>Net Height [mm]</b>	900	<b>Device heating type</b>	Indirect
<b>Net Weight [kg]</b>	190.00	<b>Steam pressure regulation</b>	Automatic - the pressure switch regulates the performance of the device
<b>Power electric [kW]</b>	24.000		

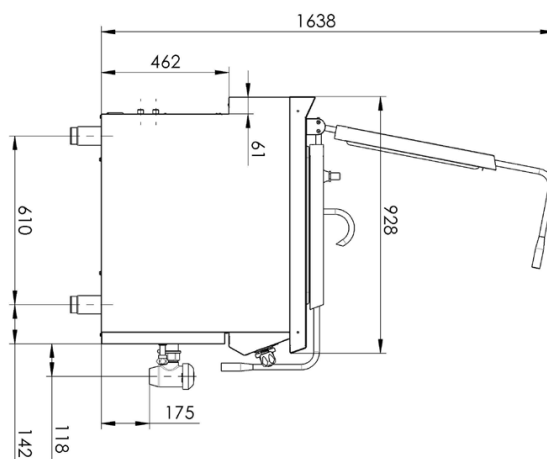
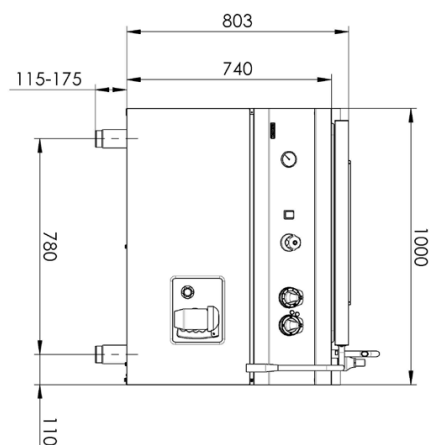
# Technical data sheet

Technical drawing

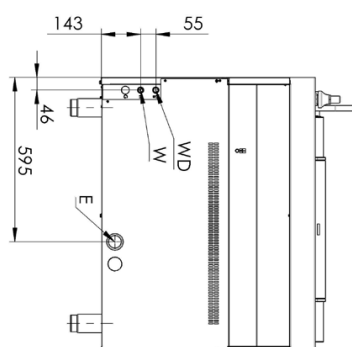


## High-capacity boiling kettle electric indirect 200 l with automatic water charge

<b>Model</b>	<b>SAP Code</b>	00019452
BIQ 90/100 200 E AWF	<b>A group of articles - web</b>	Boiling kettles



E - přívod napětí 400V  
WD - přívod vody do duplikátu  
W - přívod vody



# Technical data sheet



## Product benefits

### High-capacity boiling kettle electric indirect 200 l with automatic water charge

Model	SAP Code	00019452
BIQ 90/100 200 E AWF	A group of articles - web	Boiling kettles

1

#### Top cover in front panel design

thanks to the design, the lines of the front panel and the lid are unified, the designed design allows easy maintenance by the user

2

#### Ergonomic extended handle

even people of smaller stature can comfortably lift the lid to the fully open state

3

#### Sloped bottom for the sink

the entire volume of the container will flow out without the need to carry the food to the sink

4

#### Reinforced bottom without deformations

thanks to the reinforcements in the intermediate shell, the service life of the duplicator is extended, there is no deformation due to heat and expansion of the material

5

#### Spill-resistant design controls

ergonomically comfortable, preventing water from entering the device

6

#### Lines in the container

the operator knows at a glance how much food is inside the cooking vessel

7

#### Duplicator automatic venting

thanks to the integrated pressure switch, the pressure in the intermediate casing is automatically regulated

8

#### Automatic duplicator allowance

due to automatic filling/offering, the operator does not have to stand for the device to fill and check the boiler filling

9

#### Rotatable filling arm

convenient filling of the duplicator container, the hanger is used for maintenance and cleaning of the cooking container

10

#### Integrated waste overflow

condensed water drains directly from the top plate

11

#### Molded top plate

easier operation and cleanability, water does not flow over the edge on controls and service  
the top plate retains its stiffness without deformation over time due to use

12

#### Integrated waste overflow

the operator can check the pressure in the intermediate casing

13

#### A pre-prescribed upper lid with a lifting mechanism

lid holds open in different positions

14

#### Automatic water level control using self-diagnostic feedback

when the ideal water level is lost or when the associated functional components fail, a fault is automatically diagnosed  
the functional components are then automatically shut down

# Technical data sheet

## Technical parameters



### High-capacity boiling kettle electric indirect 200 l with automatic water charge

<b>Model</b>	<b>SAP Code</b>	00019452
BIQ 90/100 200 E AWF	<b>A group of articles - web</b>	Boiling kettles

**1. SAP Code:**

00019452

**2. Net Width [mm]:**

1000

**3. Net Depth [mm]:**

928

**4. Net Height [mm]:**

900

**5. Net Weight [kg]:**

190.00

**6. Gross Width [mm]:**

1035

**7. Gross depth [mm]:**

1030

**8. Gross Height [mm]:**

1085

**9. Gross Weight [kg]:**

198.00

**10. Device type:**

Electric unit

**11. Construction type of device:**

Stationary

**12. Power electric [kW]:**

24.000

**13. Loading:**

400 V / 3N - 50 Hz

**14. Protection of controls:**

IPX4

**15. Exterior color of the device:**

Stainless steel

**16. Material:**

AISI 304 top plate and cladding

**17. Indicators:**

operation and warm-up

**18. Drain valve diameter:**

2"

**19. Worktop type:**

Molded - comfortable cleaning maintenance

**20. Worktop material:**

AISI 304

**21. Worktop Thickness [mm]:**

2.00

**22. Surface finish:**

polished stainless steel

**23. Device heating type:**

Indirect

**24. Basin volume [l]:**

200

**25. Volume capacity of the container [l]:**

200.00

**26. Maximum device temperature [°C]:**

100

**27. Minimum device temperature [°C]:**

30

**28. Service accessibility:**

Trough the frontal panel

# Technical data sheet



## Technical parameters

### High-capacity boiling kettle electric indirect 200 l with automatic water charge

<b>Model</b>	<b>SAP Code</b>	00019452
BIQ 90/100 200 E AWF	<b>A group of articles - web</b>	Boiling kettles

**29. Safety element:**

manometer  
long handle

**30. Safety thermocouple:**

Yes

**31. Safety thermostat:**

Yes

**32. Safety thermostat up to x ° C:**

150

**33. Adjustable feet:**

Yes

**34. Bottom thickness:**

2.50

**35. Bottom material:**

AISI 316

**36. Type of pan:**

Fixed

**37. Usable volume [l]:**

183

**38. Filling:**

Mechanical cock

**39. Jacket filling:**

Automatic

**40. Basin shape:**

Practically shaped bathtub spout to minimize spillage

**41. Steam pressure regulation:**

Automatic - the pressure switch regulates the performance of the device

**42. Type of drain valve:**

conical

**43. Overflow:**

Yes

**44. Manometer:**

Yes

**45. Water filling type:**

Cold

**46. Cross-section of conductors CU [mm²]:**

10

**47. Water supply connection:**

1/2"